

MEDIUM VOLTAGE FUSES FOR CAPACITORS NORTH AMERICAN STYLE



SIBA Capacitor protection fuses can easily be fitted direct onto capacitor bushings, because they are fitted with threaded holes at both ends.

Their electrical characteristic suits the protection requirements of capacitors.

The capacitor fuses are available in the following ratings:

Voltage ratings: 4.8 / 7.2 / 15.5 kV

Amp. ratings: 6.3 - 250 A

Features/Benefits

- ▷ Standards: IEC 60 282-1 · IEC 60 549
- ▷ High interrupting rating 63 kA
- ▷ Characteristic following capacitor protection needs for back up protection
- ▷ Suitable for direct fitting onto capacitor bushing
- ▷ Cartridge type current limiting
- ▷ Special mounting brackets available on request



Selection Guide

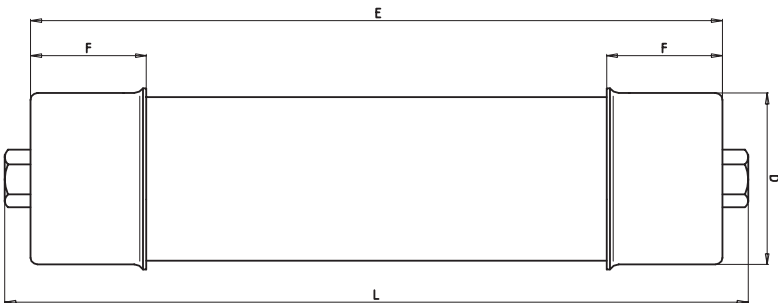
Thread	Rated Voltage AC kV	Diameter mm	Class	Part No.	Selector Guide Page	Techn. Data Page
1/2" UNC	4.8	63.5	Back up	30 349 21	HHC 3	HHC 9
1/2" UNC	4.8	76	Back up	30 350 21	HHC 3	HHC 9
1/2" UNC	4.8	76	Back up	30 351 21	HHC 3	HHC 9
1/2" UNC	7.2	63.5	Back up	30 352 21	HHC 4	HHC 9
1/2" UNC	7.2	76	Back up	30 353 21	HHC 4	HHC 9
1/2" UNC	15.5	63.5	Back up	30 354 21	HHC 5	HHC 10
M16	4.8	63.5	Back up	30 356 21	HHC 6	HHC 10
M16	4.8	76	Back up	30 357 21	HHC 6	HHC 10
M16	4.8	76	Back up	30 358 21	HHC 6	HHC 10
M16	7.2	63.5	Back up	30 359 21	HHC 7	HHC 11
M16	7.2	76	Back up	30 360 21	HHC 7	HHC 11
M16	15.5	63.5	Back up	30 361 21	HHC 8	HHC 11



**MEDIUM VOLTAGE FUSES FOR CAPACITORS
NORTH AMERICAN STYLE**

Rated voltage AC 4.8 kV Class Back up thread 1/2" UNC Standard IEC 60 282-1 · IEC 60 549

Rated current	Part No.	D= Diameter		Rated breaking capacity	Weight	Pack
		inch	mm	kA	(kg/1)	
6.3 A	30 349 21	2.5	63.5	63	1.8	1
10 A	30 349 21	2.5	63.5	63	1.8	1
16 A	30 349 21	2.5	63.5	63	1.8	1
20 A	30 349 21	2.5	63.5	63	1.8	1
25 A	30 349 21	2.5	63.5	63	1.8	1
31.5 A	30 349 21	2.5	63.5	63	1.8	1
40 A	30 349 21	2.5	63.5	63	1.8	1
50 A	30 349 21	2.5	63.5	63	1.8	1
63 A	30 349 21	2.5	63.5	63	1.8	1
80 A	30 349 21	2.5	63.5	63	1.8	1
100 A	30 349 21	2.5	63.5	63	1.8	1
125 A	30 350 21	2.99	76	63	2.5	1
160 A	30 350 21	2.99	76	63	2.5	1
200 A	30 351 21	2.99	76	63	3.6	1
250 A	30 351 21	2.99	76	63	3.6	1



30 349 21/30 350 21

- E 10.00" (254 mm)**
- L 10.75" (273 mm)**
- F 1.57" (40 mm)**

30 351 21

- E 14.13" (359 mm)**
- L 14.88" (378 mm)**
- F 1.57" (40 mm)**



MEDIUM VOLTAGE FUSES FOR CAPACITORS
NORTH AMERICAN STYLE

Rated voltage
AC 7.2 kV

Class
Back up

thread
1/2" UNC

Standard
IEC 60 282-1 · IEC 60 549

Rated current	Part No.	D= Diameter		Rated breaking capacity kA	Weight (kg/1)	Pack	
		inch	mm				
6.3 A	30 352 21	2.5	63.5	63	1.8	1	
10 A	30 352 21	2.5	63.5	63	1.8	1	
16 A	30 352 21	2.5	63.5	63	1.8	1	
20 A	30 352 21	2.5	63.5	63	1.8	1	
25 A	30 352 21	2.5	63.5	63	1.8	1	
31.5 A	30 352 21	2.5	63.5	63	1.8	1	
40 A	30 352 21	2.5	63.5	63	1.8	1	
50 A	30 352 21	2.5	63.5	63	1.8	1	
63 A	30 352 21	2.5	63.5	63	1.8	1	
80 A	30 352 21	2.5	63.5	63	1.8	1	
100 A	30 352 21	2.5	63.5	63	1.8	1	
125 A	30 353 21	2.99	76	63	3.6	1	
160 A	30 353 21	2.99	76	63	3.6	1	
200 A	30 353 21	2.99	76	63	3.6	1	

30 352 21

- E 10.00" (254 mm)**
- L 10.75" (273 mm)**
- F 1.57" (40 mm)**

30 353 21

- E 14.13" (359 mm)**
- L 14.88" (378 mm)**
- F 1.57" (40 mm)**

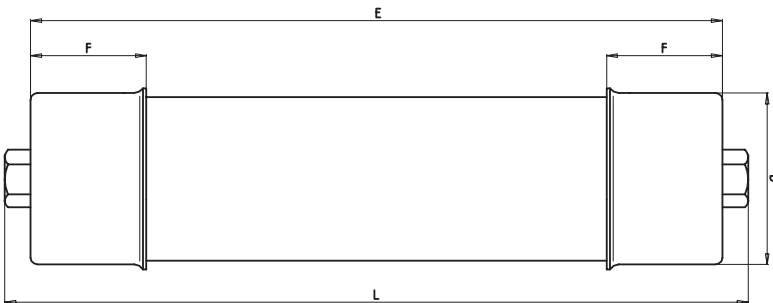




**MEDIUM VOLTAGE FUSES FOR CAPACITORS
NORTH AMERICAN STYLE**

Rated voltage AC 15.5 kV Class Back up thread 1/2" UNC Standard IEC 60 282-1 · IEC 60 549

Rated current	Part No.	D= Diameter		Rated breaking capacity	Weight	Pack
		inch	mm	kA	(kg/1)	
6.3 A	30 354 21	2.5	63.5	63	2.5	1
10 A	30 354 21	2.5	63.5	63	2.5	1
16 A	30 354 21	2.5	63.5	63	2.5	1
20 A	30 354 21	2.5	63.5	63	2.5	1
25 A	30 354 21	2.5	63.5	63	2.5	1
31.5 A	30 354 21	2.5	63.5	63	2.5	1
40 A	30 354 21	2.5	63.5	63	2.5	1
50 A	30 354 21	2.5	63.5	63	2.5	1
63 A	30 354 21	2.5	63.5	63	2.5	1
80 A	30 354 21	2.5	63.5	63	2.5	1
100 A	30 354 21	2.5	63.5	63	2.5	1



E	14.13" (359 mm)
L	14.88" (378 mm)
F	1.57" (40 mm)



MEDIUM VOLTAGE FUSES FOR CAPACITORS
NORTH AMERICAN STYLE

Rated voltage
AC 4.8 kV

Class
Back up

thread
M16

Standard
IEC 60 282-1 · IEC 60 549

Rated current	Part No.	D= Diameter		Rated breaking capacity kA	Weight (kg/1)	Pack
		inch	mm			
6.3 A	30 356 21	2.5	63.5	63	1.8	1
10 A	30 356 21	2.5	63.5	63	1.8	1
16 A	30 356 21	2.5	63.5	63	1.8	1
20 A	30 356 21	2.5	63.5	63	1.8	1
25 A	30 356 21	2.5	63.5	63	1.8	1
31.5 A	30 356 21	2.5	63.5	63	1.8	1
40 A	30 356 21	2.5	63.5	63	1.8	1
50 A	30 356 21	2.5	63.5	63	1.8	1
63 A	30 356 21	2.5	63.5	63	1.8	1
80 A	30 356 21	2.5	63.5	63	1.8	1
100 A	30 356 21	2.5	63.5	63	1.8	1
125 A	30 357 21	2.99	76	63	2.5	1
160 A	30 357 21	2.99	76	63	2.5	1
200 A	30 358 21	2.99	76	63	3.6	1
250 A	30 358 21	2.99	76	63	3.6	1

30 356 21/30 357 21

E	10.00" (254 mm)
L	10.75" (273 mm)
F	1.57" (40 mm)

30 358 21

E	14.13" (359 mm)
L	14.88" (378 mm)
F	1.57" (40 mm)





**MEDIUM VOLTAGE FUSES FOR CAPACITORS
NORTH AMERICAN STYLE**

Rated voltage AC 7.2 kV Class Back up thread M16 Standard IEC 60 282-1 · IEC 60 549

Rated current	Part No.	D= Diameter		Rated breaking capacity	Weight	Pack
		inch	mm	kA	(kg/1)	
6.3 A	30 359 21	2.5	63.5	63	1.8	1
10 A	30 359 21	2.5	63.5	63	1.8	1
16 A	30 359 21	2.5	63.5	63	1.8	1
20 A	30 359 21	2.5	63.5	63	1.8	1
25 A	30 359 21	2.5	63.5	63	1.8	1
31.5 A	30 359 21	2.5	63.5	63	1.8	1
40 A	30 359 21	2.5	63.5	63	1.8	1
50 A	30 359 21	2.5	63.5	63	1.8	1
63 A	30 359 21	2.5	63.5	63	1.8	1
80 A	30 359 21	2.5	63.5	63	1.8	1
100 A	30 359 21	2.5	63.5	63	1.8	1
125 A	30 360 21	2.99	76	63	2.5	1
160 A	30 360 21	2.99	76	63	2.5	1
200 A	30 360 21	2.99	76	63	2.5	1



30 359 21

E	10.00" (254 mm)
L	10.75" (273 mm)
F	1.57" (40 mm)

30 360 21

L1	14.13" (359 mm)
L2	14.88" (378 mm)
F	1.57" (40 mm)



MEDIUM VOLTAGE FUSES FOR CAPACITORS
NORTH AMERICAN STYLE

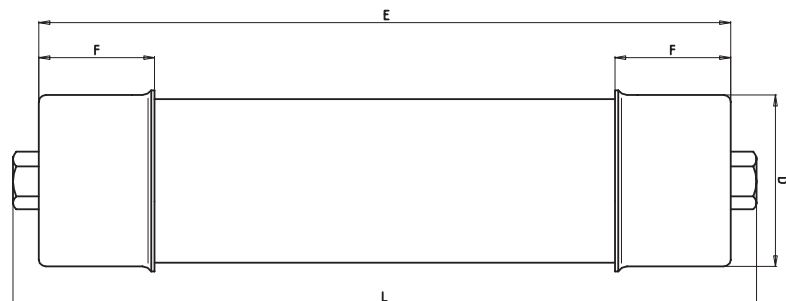
Rated voltage
AC 15.5 kV

Class
Back up

thread
M16

Standard
IEC 60 282-1 · IEC 60 549

Rated current	Part No.	D= Diameter		Rated breaking capacity	Weight	Pack
		inch	mm	kA	(kg/1)	
6.3 A	30 361 21	2.5	63.5	63	2.5	1
10 A	30 361 21	2.5	63.5	63	2.5	1
16 A	30 361 21	2.5	63.5	63	2.5	1
20 A	30 361 21	2.5	63.5	63	2.5	1
25 A	30 361 21	2.5	63.5	63	2.5	1
31.5 A	30 361 21	2.5	63.5	63	2.5	1
40 A	30 361 21	2.5	63.5	63	2.5	1
50 A	30 361 21	2.5	63.5	63	2.5	1
63 A	30 361 21	2.5	63.5	63	2.5	1
80 A	30 361 21	2.5	63.5	63	2.5	1
100 A	30 361 21	2.5	63.5	63	2.5	1



- E** 14.13" (359 mm)
- L** 14.88" (378 mm)
- F** 1.57" (40 mm)

Rated voltage AC 4.8 kV Class Back up thread 1/2" UNC

Rated current	Part No.	Breaking current kA	Pre-arcing I ² t-value A ² s	Total I ² t-value A ² s	Power loss W
6.3 A	30 349 21	63	45	330	11
10 A	30 349 21	63	75	500	19
16 A	30 349 21	63	250	1,800	13
20 A	30 349 21	63	640	4,300	14
25 A	30 349 21	63	1050	6,700	16
31.5 A	30 349 21	63	1700	10,800	20
40 A	30 349 21	63	2900	17,100	26
50 A	30 349 21	63	5700	29,700	30
63 A	30 349 21	63	10,700	59,400	37
80 A	30 349 21	63	21,000	126,000	42
100 A	30 349 21	63	33,000	189,000	55
125 A	30 350 21	63	47,000	351,000	78
160 A	30 350 21	63	90,000	513,000	93
200 A	30 351 21	63	230,000	571,000	123
250 A	30 351 21	63	371,000	892,000	161

Rated voltage AC 7.2 kV Class Back up thread 1/2" UNC

Rated current	Part No.	Breaking current kA	Pre-arcing I ² t-value A ² s	Total I ² t-value A ² s	Power loss W
6.3 A	30 352 21	63	45	330	16
10 A	30 352 21	63	75	500	22
16 A	30 352 21	63	250	1,800	19
20 A	30 352 21	63	640	4,300	21
25 A	30 352 21	63	1050	6,700	24
31.5 A	30 352 21	63	1700	10,800	30
40 A	30 352 21	63	2900	17,100	39
50 A	30 352 21	63	5700	29,700	45
63 A	30 352 21	63	10,700	59,400	55
80 A	30 352 21	63	21,000	126,000	63
100 A	30 352 21	63	33,000	189,000	82
125 A	30 353 21	63	47,000	351,000	117
160 A	30 353 21	63	90,000	513,000	139
200 A	30 353 21	63	230,000	571,000	154

**TIME CURRENT CHARACTERISTICS AND CUT OFF CURRENT DIAGRAM
PLEASE REFER TO PAGE HHC 12**

Rated voltage
AC 15.5 kV

Class
Back up

thread
1/2" UNC

Rated current	Part No.	Breaking current kA	Pre-arcing I ² t-value A ² s	Total I ² t-value A ² s	Power loss W
6.3 A	30 354 21	63	45	330	21
10 A	30 354 21	63	75	500	38
16 A	30 354 21	63	250	1,800	37
20 A	30 354 21	63	640	4,300	40
25 A	30 354 21	63	1050	6,700	56
31.5 A	30 354 21	63	1700	10,800	65
40 A	30 354 21	63	2900	17,100	84
50 A	30 354 21	63	5700	29,700	101
63 A	30 354 21	63	10,700	59,400	106
80 A	30 354 21	63	21,000	126,000	137
100 A	30 354 21	63	33,000	189,000	182

Rated voltage
AC 4.8 kV

Class
Back up

thread
M16

Rated current	Part No.	Breaking current kA	Pre-arcing I ² t-value A ² s	Total I ² t-value A ² s	Power loss W
6.3 A	30 349 21	63	45	330	11
10 A	30 349 21	63	75	500	19
16 A	30 349 21	63	250	1,800	13
20 A	30 349 21	63	640	4,300	14
25 A	30 349 21	63	1050	6,700	16
31.5 A	30 349 21	63	1700	10,800	20
40 A	30 349 21	63	2900	17,100	26
50 A	30 349 21	63	5700	29,700	30
63 A	30 349 21	63	10,700	59,400	37
80 A	30 349 21	63	21,000	126,000	42
100 A	30 349 21	63	33,000	189,000	55
125 A	30 350 21	63	47,000	351,000	78
160 A	30 350 21	63	90,000	513,000	93
200 A	30 351 21	63	230,000	571,000	123
250 A	30 351 21	63	371,000	892,000	161

**TIME CURRENT CHARACTERISTICS AND CUT OFF CURRENT DIAGRAM
PLEASE REFER TO PAGE HHC 12**

Rated voltage AC 7.2 kV Class Back up thread M16

Rated current	Part No.	Breaking current kA	Pre-arcing I ² t-value A ² s	Total I ² t-value A ² s	Power loss W
6.3 A	30 352 21	63	45	330	16
10 A	30 352 21	63	75	500	22
16 A	30 352 21	63	250	1,800	19
20 A	30 352 21	63	640	4,300	21
25 A	30 352 21	63	1050	6,700	24
31.5 A	30 352 21	63	1700	10,800	30
40 A	30 352 21	63	2900	17,100	39
50 A	30 352 21	63	5700	29,700	45
63 A	30 352 21	63	10,700	59,400	55
80 A	30 352 21	63	21,000	126,000	63
100 A	30 352 21	63	33,000	189,000	82
125 A	30 353 21	63	47,000	351,000	117
160 A	30 353 21	63	90,000	513,000	139
200 A	30 353 21	63	230,000	571,000	154

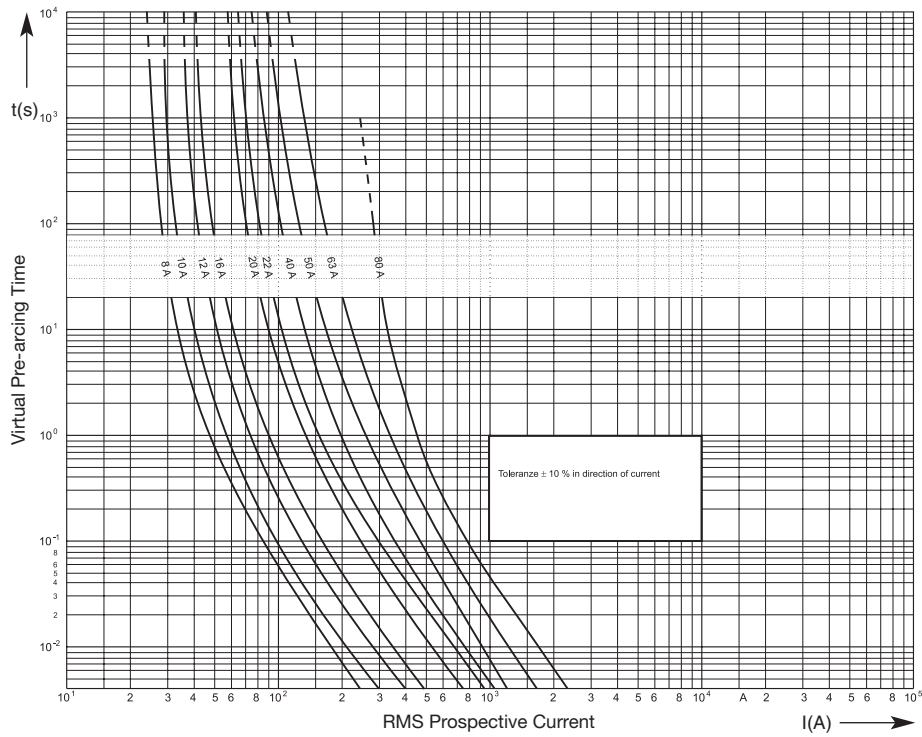
Rated voltage AC 15.5 kV Class Back up thread M16

Rated current	Part No.	Breaking current kA	Pre-arcing I ² t-value A ² s	Total I ² t-value A ² s	Power loss W
6.3 A	30 354 21	63	45	330	21
10 A	30 354 21	63	75	500	38
16 A	30 354 21	63	250	1,800	37
20 A	30 354 21	63	640	4,300	40
25 A	30 354 21	63	1050	6,700	56
31.5 A	30 354 21	63	1700	10,800	65
40 A	30 354 21	63	2900	17,100	84
50 A	30 354 21	63	5700	29,700	101
63 A	30 354 21	63	10,700	59,400	106
80 A	30 354 21	63	21,000	126,000	137
100 A	30 354 21	63	33,000	189,000	182

**TIME CURRENT CHARACTERISTICS AND CUT OFF CURRENT DIAGRAM
PLEASE REFER TO PAGE HHC 12**

Time Current Characteristics

Back up



Cut Off Current Diagram

Back up

