

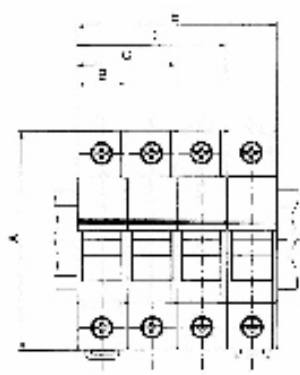
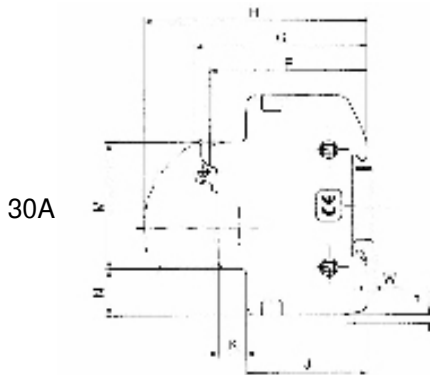


SIBA 600V 'ZS' DIN fuseholders

ZS modules are DIN rail mountable, deadfront fuseholders that accept standard metric ferrule fuses.

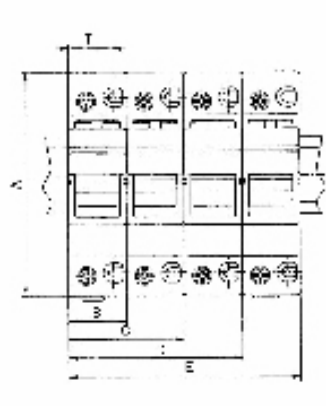
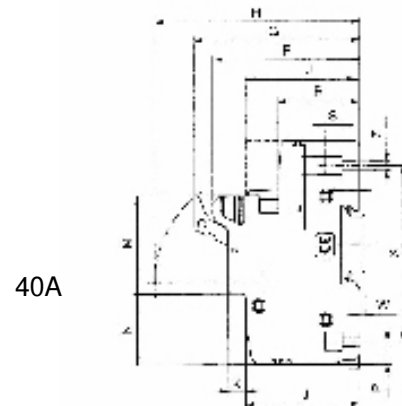
ZS modules in 14 x 51mm and 22 x 58mm versions are available with a microswitch option.

- UR recognised. 10x38mm version is cUR recognised (file E186970)
- Available in 1, 2, & 3 pole versions.



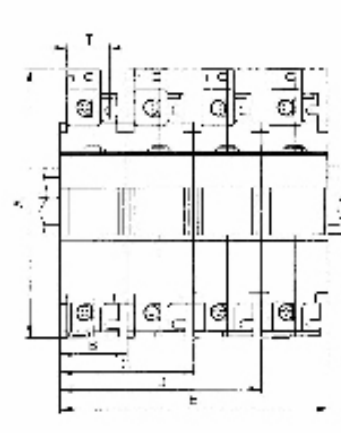
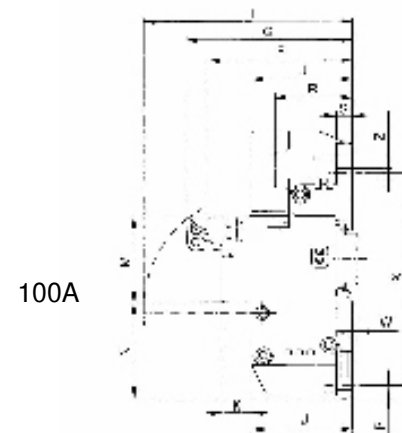
Size 10 x 38		
Part No.	51 063 04.DC for 1000 V Dc	
	51 063 04	1 pol.
	51 063 04.2	2 pol.
	51 063 04.3	3 pol.
Power acceptance: 4W		

A	3.07" (78 mm)	H	3.13" (79.5 mm)
B	0.70" (17.8 mm)	J	1.69" (43 mm)
C	1.40" (35.6 mm)	K	0.40" (10 mm)
D	2.10" (53.4 mm)	M	1.77" (45 mm)
E	2.80" (71.2 mm)	N	0.65" (16.5 mm)
F	2.20" (56 mm)	P	0.13" (3.2 mm)
G	2.40" (61 mm)	W	0.10" (2.5 mm)



Size 14 x 51			
Part No.	51 058 04	51 058 04.S	1 pol.
	51 058 04.2		2 pol.
	51 058 04.3	51 058 04.3S	3 pol.
S= Microswitch			
Power acceptance: 6W			

A	4.04" (102.5 mm)	M	1.77" (45 mm)
B	1.04" (26.5 mm)	N	1.69" (32.5 mm)
C	2.10" (53 mm)	P	0.40" (10.5 mm)
D	3.13" (79.5 mm)	R	1.48" (37.5 mm)
E	4.17" (106 mm)	S	0.30" (8 mm)
F	2.66" (67.5 mm)	T	0.80" (20.5 mm)
G	3.00" (76 mm)	U \varnothing	0.33" (8.5 mm)
H	3.70" (94.2 mm)	W	0.1" (2.5 mm)
J	2.07" (52.5 mm)	X	3.17" (80.5 mm)
K	0.30" (8 mm)	Z \varnothing	0.17" (4.4 mm)



Size 22 x 58			
Part No.	51 060 04	51 063 04.S	1 pol.
	51 060 04.2		2 pol.
	51 060 04.3	51 063 04.3S	3 pol.
S= Microswitch			
Power acceptance: 12W			

A	5.50" (140 mm)	M	1.77" (45 mm)
B	1.40" (35.6 mm)	N	2.00" (50.5 mm)
C	2.80" (71.2 mm)	P	0.30" (7.5 mm)
D	4.20" (106.8 mm)	R	1.57" (40 mm)
E	5.60" (142.4 mm)	S	0.30" (8 mm)
F	2.97" (75.5 mm)	T	1.06" (27 mm)
G	3.44" (87.5 mm)	W	0.10" (2.5 mm)
H	4.35" (110.5 mm)	X	4.30" (109.5 mm)
J	2.10" (53 mm)	Z \varnothing	0.17" (4.4 mm)
K	0.63" (16 mm)		