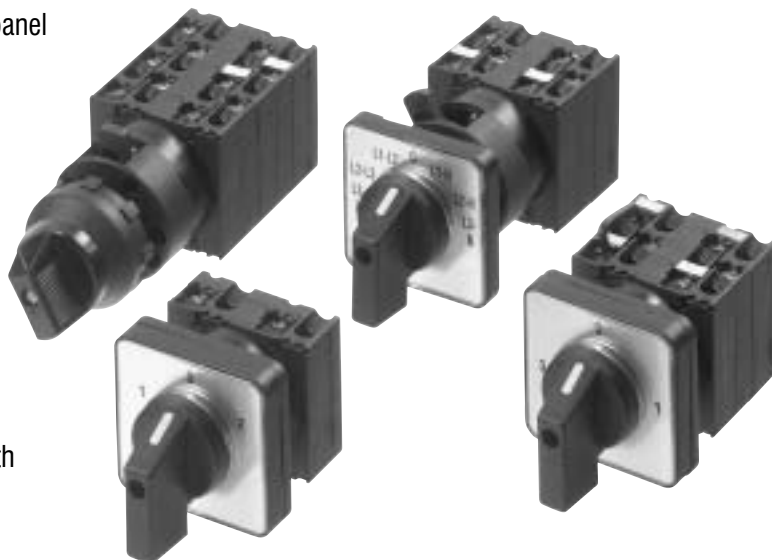


# Rotary Cam Switch CS20A

Rotary Cam Switch with central fixing 22.5mm for panel mounting

- Range of rotary cam switches with a choice of 4 operators
- Key operators permit key removal in all latched positions
- Finger proof screw terminals to IP20 protection
- UL/CSA
- Designed to IEC 60947-3
- Single hole, front panel mounting
- Switch body supplied with legend plate for use with square escutcheon frame actuator



## Options and ordering matrix

### Handle operators

**RB2** Round bezel



### Key operators

**RBK2** Round bezel



**SP2** Square escutcheon



**SPK2** Square escutcheon



## Specification

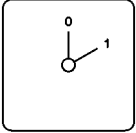
Rated thermal current I <sub>th</sub>	A	20
Rated operational voltage U <sub>e</sub> IEC/VDE/BS	V	690
Utilisation category AC21A, AC21B		
Rated operational current I <sub>e</sub>	A	20
Utilisation category AC23B @ 400V	A	16
Utilisation category AC15	220/240V 380/440V	6A 4A
Cable cross section	mm <sup>2</sup>	0.75-2.5
Contact material		Silver alloy
Mounting hole diameter		22.5mm
Maximum backup fuse (gl)		20A
Protection class from rear		IP20

## Accessories

Spare key	B4-R455
Tightening wrench	J7049

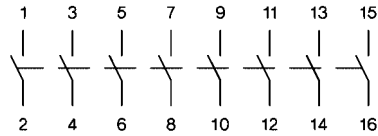
## Options and ordering matrix continued

### Off-On switch

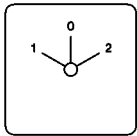


Description	Cells	Part Ref
1 Pole	1	CS20A-A1
2 Pole	1	CS20A-A2
3 Pole	2	CS20A-A3
4 Pole	2	CS20A-A4
6 Pole	3	CS20A-A6
8 Pole	3	CS20A-A8

### Connection diameter

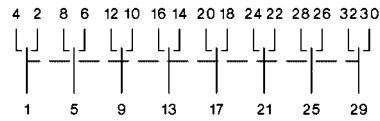


### Change over switches, with off

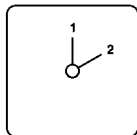


Description	Cells	Part Ref
1 Pole	1	CS20A-U1
2 Pole	2	CS20A-U2
3 Pole	3	CS20A-U3
4 Pole	4	CS20A-U4
6 Pole	6	CS20A-U6
8 Pole	8	CS20A-U8

### Connection diameter

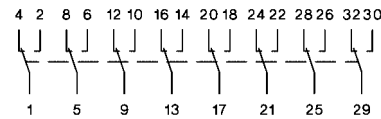


### Change over switches, without off

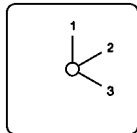


Description	Cells	Part Ref
1 Pole	1	CS20A-W1
2 Pole	2	CS20A-W2
3 Pole	3	CS20A-W3
4 Pole	4	CS20A-W4
6 Pole	6	CS20A-W6
8 Pole	8	CS20A-W8

### Connection diameter

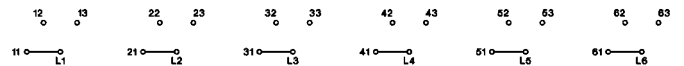


### 3 position step switches, without off

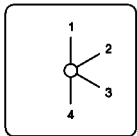


Description	Cells	Part Ref
1 Pole	2	CS20A-ST31
2 Pole	3	CS20A-ST32
3 Pole	5	CS20A-ST33

### Connection diameter

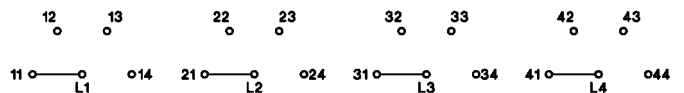


### 4 position step switches, without off

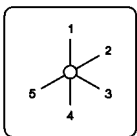


Description	Cells	Part Ref
1 Pole	2	CS20A-ST41
2 Pole	4	CS20A-ST42
3 Pole	6	CS20A-ST43

### Connection diameter

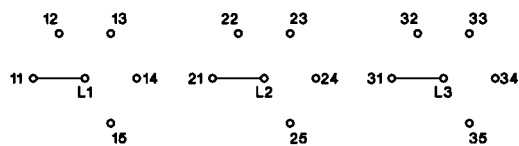


### 5 position step switches, without off

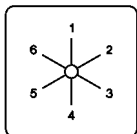


Description	Cells	Part Ref
1 Pole	3	CS20A-ST51
2 Pole	5	CS20A-ST52
3 Pole	8	CS20A-ST53

### Connection diameter

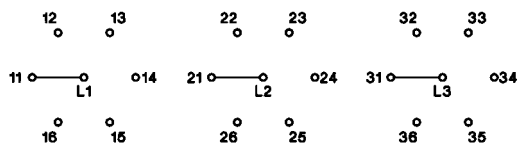


### 6 position step switches, without off



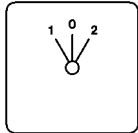
Description	Cells	Part Ref
1 Pole	3	CS20A-ST61
2 Pole	6	CS20A-ST62
3 Pole	9	CS20A-ST63

### Connection diameter



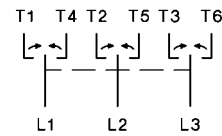
## Options and ordering matrix continued

### Change over switch with spring return to off

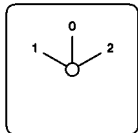


Description	Cells	Part Ref
1 Pole	1	CS20A-UR1
2 Pole	2	CS20A-UR2
3 Pole	3	CS20A-UR3

### Connection diameter

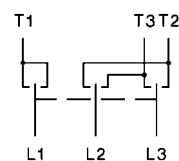


### 3 phase motor reversing switch

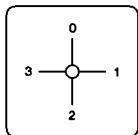


Description	Cells	Part Ref
5.5kW @ 380/440	3	CS20A-WU3

### Connection diameter

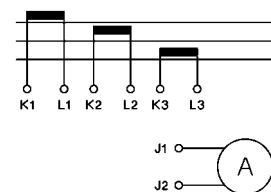
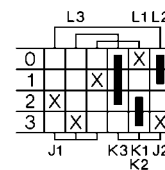


### 3 current transformers



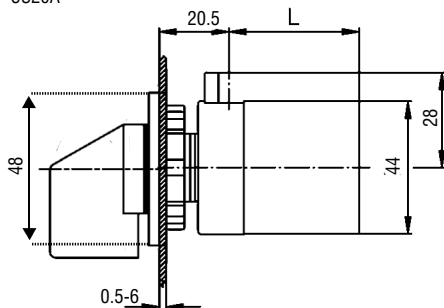
Description	Cells	Part Ref
1 Pole	3	CS20A-M31

### Connection diameter



## Dimensions

Central fixing 22.5mm  
CS20A



For further dimensions see table below

Dimension L with .. cells

Type	1	2	3	4	5	6	7	8
CS20A	36,5	46	55,5	65	74,5	84	93,5	103

## Mounting hole

