

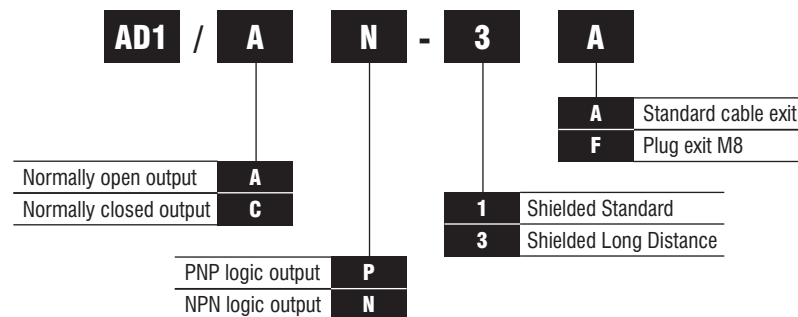
Miniature Inductive 3-wire DC Proximity Switch AD1



- $\varnothing 5\text{mm} \times 25\text{mm}$
- Stainless steel housing
- LED status indicator
- 10 - 30VDC
- High switching speed 7kHz
- Cable exit and plug-in types
- Nominal sensing distance: Shielded Standard 0.8mm
Shielded Long Distance 1.5mm



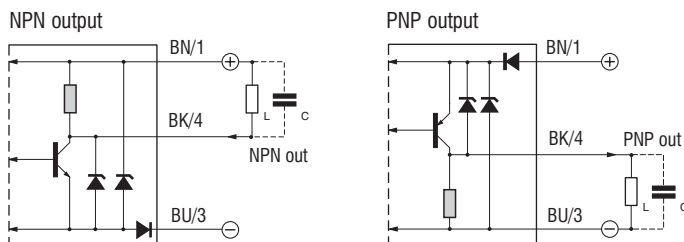
Options and ordering codes



Specifications

Model	AD1/xx-1x	AD1/xx-3x
Nominal sensing distance S_n	0.8mm	1.5mm
Hysteresis	1 to 20%	
Standard target	5 x 5 mm	
Repeat accuracy	5% @ $U_B = 20$ to 30 V; $T_a = 23^\circ\text{C} \pm 5^\circ\text{C}$	
Operating voltage	10 to 30 VDC	
Ripple	$\leq 10\%$	
Output current	$\leq 100\text{ mA}$	
Output voltage drop	$\leq 1.5\text{ V @ } 100\text{mA}$	
No-load current	$\leq 10\text{ mA}$	
Leakage current	$\leq 10\ \mu\text{A}$	
Switching frequency	7 kHz	
Time delay before availability	$\leq 50\text{ ms}$	
Temperature range	-25°C to $+70^\circ\text{C}$	
Thermal drift	$\leq 10\%$	
Supply electrical protection	polarity reversal	
Output electrical protection	short circuit (auto reset), overvoltage pulses	
Protection degree	IP67	
Housing material	stainless steel AISI 303	
Active head material	PBT	
LED indicators	On (yellow LED)	

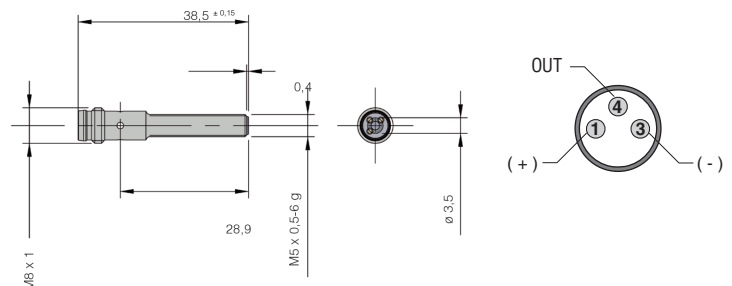
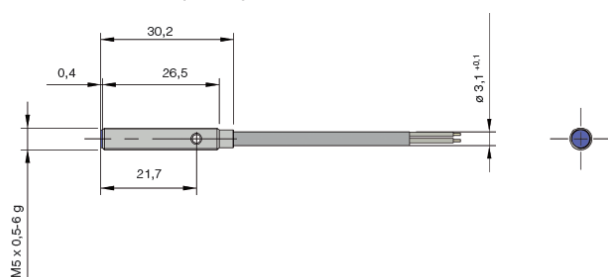
Wiring diagrams



Correction factor

Model	FE360	Copper	Aluminum	Brass	Stainless Steel
AD1/xx-1x	1	$0.32 \pm 10\%$	$0.26 \pm 10\%$	$0.35 \pm 10\%$	$0.66 \pm 10\%$
AD1/xx-3x	1	$0.33 \pm 10\%$	$0.27 \pm 10\%$	$0.34 \pm 10\%$	$0.66 \pm 10\%$

Dimensions (mm)



Connectors M8